

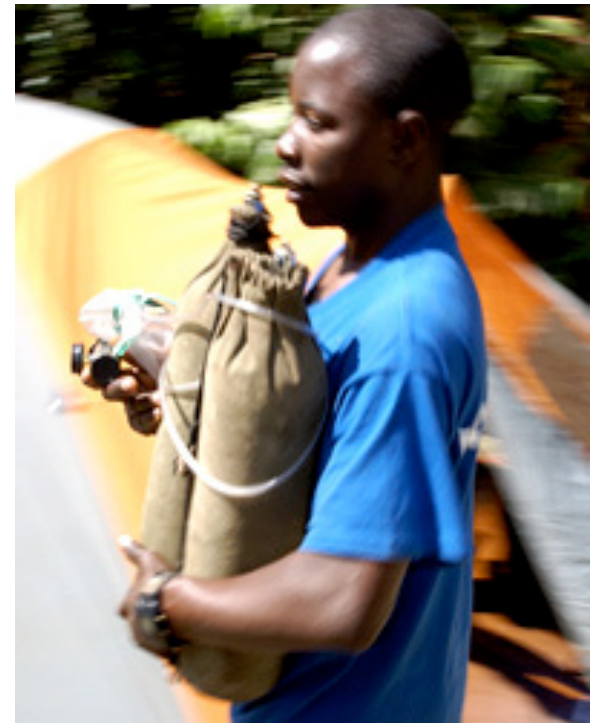


Congo Climbs

Adventure International runs ethical, professionally led climbs. Our business partners sell our climbs to their clients on the basis of:

1. **Ethics:** Adventure International works hand in hand with our crews, not in spite of them. We do not overload our porters and our payment policy is to ensure that our porters and crews are among the highest paid in the industry. Our ethical approach is the number one reason that our prices are higher than the average 'budget' trip.
2. **Professional Guides and crews:** We operate bi annual training programs for guides, assistant guides, trainees and camp crews. Our in house training also incorporates independent professionals from the Red Cross for CPR training and advanced first aid topics. Adventure International also has "Constant Monitoring" practices that include pulse oximetry and scorecard monitoring of key aspects of altitude sickness. Is Mt Kenya a dangerous hike? Yes. Blissful ignorance tends to surround most groups that ascend the mountain and most people are fine. It is the scenarios when unavoidable instances of high altitude sickness which poses the most threat where appropriate treatment are essential. Most instances of death on Mt Kenya have been due to ignorance and bad decision-making.
3. **Clients experience:** with sound ethical practices and excellent training Adventure International has a well motivated professional team that not only guide clients safely on the mountain but also educate and inform clients about the environment they walk through. Endemic flora and the relationship of man and beast have all shaped Mt Kenya's ecology and the geology is as fascinating as anywhere on Earth.

SAFETY DEVICES



Nyiragongo Volcano

Why this itinerary?

Spend two days tracking gorillas and chimps in the Virunga National Park followed by a trip to the summit of Nyiragongo in support of saving some of the world's most pristine ecosystems.

Description

A 10 day trip which incorporates the best of a remote Central and East African region. You experience a close encounter with our closest relatives and then summit a stratovolcano, all inside the Virunga National Park. Nyiragongo has a magnificent crater lake and stands at 3470 meters (11,385ft). The volcano has been erupting since 1882 and activity at some points has been continuous for years at a time, often in the form of a churning lava lake in the crater. Nyiragongo lies in the Great Rift Valley bordering both the Democratic Republic of Congo and Rwanda. After the climb you relax at Lake Kivu!

Highlights

Gorillas, Chimpanzees, Nyiragongo volcano, and Lake Kivu.



Brief Itinerary

#	Area	Overview
1	Nairobi	Arrive Jomo Kenyatta International Airport. Meet & greet and transfer to Fairview
2	Kigali	Fly to Kigali airport. Meet & greet, visit Genocide Museum. Welcome dinner. Overnight Hotel Chez Lando
3	Tongo	Drive to Goma and Rumangabo. Day visit with local NGO. Overnight Tongo campsite
4	Virunga Park	Chimpanzee tracking. Drive to Bukima. Overnight Bukima campsite
5	Virunga Park	Gorilla tracking. Drive to Goma. Overnight Stella Matutina
6	Nyiragongo	Begin hike to summit Nyiragongo. Overnight mountain camp
7	Nyiragongo	Hike around crater lake. Overnight mountain camp
8	Lake Kivu	End hike of Nyiragongo. Drive to Lake Kivu. Overnight Lake Kivu Serena Hotel
9	Kigali / Nairobi	Transfer to Kigali. Fly to Nairobi. Transfer to hotel. Overnight Fairview (*celebration dinner*)
10	Depart	Transfer to Jomo Kenyatta International Airport for departures
<i>END OF SERVICES</i>		

Detailed Itinerary

Day 1 / NAIROBI

Upon arrival into Jomo Kenyatta International Airport you are personally met and transferred to your accommodation in Nairobi.

Overnight Fairview (Dinner)



Day 2 / KIGALI

You take a morning flight to Kigali. Upon arrival you are personally met and transferred to the Genocide Museum. After you are transferred to your hotel and there is a welcome dinner and activities with group.

Overnight Chez Lando (Breakfast, Lunch, Dinner)



Day 3 / TONGO

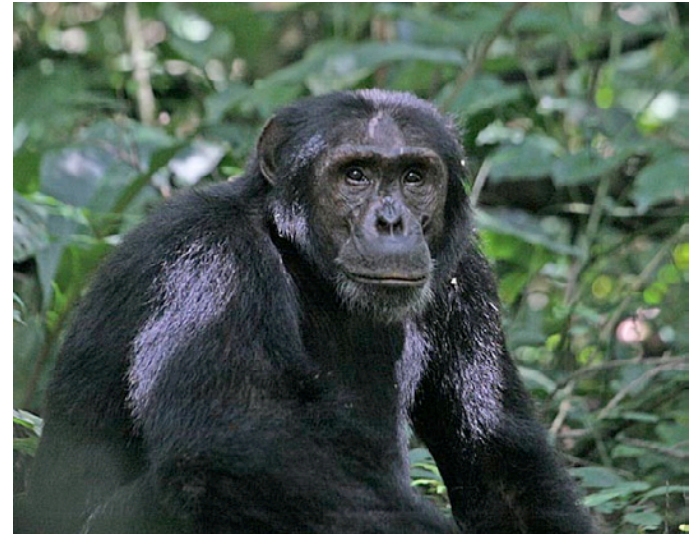
After breakfast you drive towards Goma and Rumangabo. You spend a day with a local NGO. In the afternoon you head towards Tongo where you will be met by your camp and crew.

Overnight Tongo campsite (Breakfast, Lunch, Dinner)

Day 4 / VIRUNGA NATIONAL PARK

Today you go Chimpanzee tracking in Virunga National Park. A relatively early start is required to meet your rangers and the park gate. You receive a full briefing and then set out to track our closest relative. The Chimpanzees are fairly habituated and are delightful creatures to watch. The forest here is also extremely diverse in species and after an hour you head back to the trailhead and return to the vehicles. You drive to Bukima and overnight at another campsite.

Overnight Bukima campsite (Breakfast, Lunch, Dinner)



Day 5 / VIRUNGA NATIONAL PARK

Breakfast is taken early to enable you to arrive at the park offices at 7am where you are allocated to a gorilla group. The tracker guides then give a briefing on the rules and regulations and codes of conduct before setting off once again in a vehicle to the trailheads. You then set off to track the gorillas, which depends heavily upon which group you are tracking and where they are and can be very exertive. Once located you then have only 1 hour to spend with them but possibly one of the most extraordinary hour of your life. After your time with the Gorillas you return to the trailhead and you are transferred to Goma.

Overnight Stella Matutina (Breakfast, Lunch, Dinner)



Day 6 / NYIRAGONGO

You awake early and are driven to the base of Nyiragongo and begin your climb from Kibati village. Taking it nice and easy you continue climbing the volcano. You enjoy lunch on trail and arrive at the summit in the late afternoon. You enjoy spectacular views of the hot lava lakes and iridescent glow. There are few remaining lava lakes in the world and this is an impressive one. You overnight on the giant crater rim.

Overnight mountain Camp (Breakfast, Lunch, Dinner)

Day 7 / NYIRAGONGO

Today you explore the crater rim and hike around the lava lake.

Overnight mountain camp (Breakfast, Lunch, Dinner)

Day 8 / LAKE KIVU

After breakfast you descend Nyiragongo and meet your vehicles. You drive to the Rwanda and relax at Lake Kivu!

Overnight Lake Kivu Serena Hotel (Breakfast, Lunch, Dinner)



Day 9 / KIGALI / NAIROBI

From Lake Kivu you drive towards Kigali. You connect with a flight to Nairobi. Upon arrival you are personally met and transferred to your hotel. Tonight there is a celebration dinner at a local restaurant.

Overnight Fairview (Breakfast, Lunch, Dinner)

Day 10 / DEPART

Today you are transferred to Jomo Kenyatta International Airport for International departures.

(Breakfast)

END OF SERVICES



ACCOMMODATIONS

FAIRVIEW is that rare bird in Africa... a comfortable hotel that hasn't decked itself out in feathers of upmarket gloss and tasteless luxury. The hotel's leafy acres and scattered buildings are laid out on Nairobi Hill, a world away from the overheated bustle.



HOTEL CHEZ LANDO is a quaint garden-style hotel located just five minutes from Kigali Airport and is right on the way to the heart of town, where simplicity and warm hospitality are offered in true Rwandan fashion.



CONGO PRIVATE CAMP is set up every step of the way and ready for when you arrive into camp in the afternoon. A mess tent contains a table, chairs, and all cutlery. Guest tents fit 2 people comfortably with a sleeping mat, all set up for a comfortable sleep.



STELLA MATUTINA a quaint lodge in Goma just 30 minutes from the airport. Fantastic views of Lake Kivu with great restaurant and bar.



LAKE KIVU SERENA HOTEL, serenely sited on the white sandy shores of Lake Kivu several hours drive from the Rwandan capital. Luxury rooms overlook the hotel's private beach, panoramic restaurant, indoor and beachside bars, swimming pool, and health centre.



DESTINATIONS

The Democratic Republic of Congo, Central Africa

The Democratic Republic of the Congo, formerly Zaire, is a nation located in Central Africa, with a short Atlantic coastline. It is the 3rd largest country in Africa by area after Sudan and Algeria. Congo is the most populous officially Francophone country where French is the official language. In order to distinguish it from its neighbor, it is referred to as DR Congo or DRC. It borders the Central African Republic and Sudan to the north, Uganda, Rwanda, and Burundi in the east, Zambia and Angola to the south, the Atlantic Ocean to the west, and is separated from Tanzania by Lake Tanganyika in the east. The second Congo War, beginning in 1998, devastated the country, involved 7 foreign armies and is referred to as the 'African World War'. Despite the signing of peace accords in 2003, fighting continues in the east of the country. The war is the world's deadliest conflict since World War II, killing 5.4 million people. Although citizens of the DRC are among the poorest in the world, the DRC is widely considered to be the richest country in the world regarding natural resources; with untapped deposits of raw minerals estimated to be worth in excess of \$24 trillion – equivalent of the gross domestic product of the US and Europe combined.

European exploitation and administration took place from the 1870's until the 1920's. Sir Henry Morton Stanley undertook explorations under sponsorship of King Leopold of Belgium. The Congo Free State produced rubber and colonists brutalized the local population if quotas were not met and populations declined dramatically due to diseases. The Free State's actions were internationally condemned and influenced writers such as Mark Twain and Joseph Conrad best known for *Heart of Darkness*. In 1908, due to international pressure, the Belgian Parliament took over the Free State from the king and it was called Belgian Congo. In the 1960's The Belgian Congo achieved independence, soon after a series of groups were looking to secede. Most Europeans fled and backed by other nations, Joseph Mobutu became in charge and soon began his rule of Zaire. For close to 20 years Mobutu ruled Zaire, which achieved severe human rights violations, political repression, and severe corruption. Neighboring tensions from the Rwandan Genocide and Civil War spilled over to Zaire and consequently led to Mobutu's overthrow. The fragility of the state government and existing militias has allowed continued conflict and human rights abuses. There has been a long-standing impact on civilians from armed conflict and incommensurate international response.

Additional Information

Entry Requirements

DR Congo Visas need to be attained before arrival. US Citizens pay \$120 per person and these Visas must be arranged beforehand. A passport valid for six months after date of entry is required. Visitors must hold return/onward tickets and all documents required for their next destination.

Vaccinations

DR Congo requires proof of a valid Yellow Fever immunization certificate. (Immigration officials might force a visitor to get immunized, which is at an extra cost). Hepatitis A and B, Tetanus, and Typhoid immunizations are recommended for all travelers. Malaria prophylaxis is recommended and you should consult your local doctor or physician to advise which malaria medication is best suited for you. Information on vaccinations and other health precautions, such as safe food and water precautions and insect bite protection, may be obtained from the CDC's Internet site at <http://www.cdc.gov/travel>

Weather

Goma / North Kivu, DR Congo

Month	Jan	Feb	Mar	Apr	May	Jun	Jul	Aug	Sep	Oct	Nov	Dec
Avg High F	78	77	72	77	77	77	77	78	77	78	77	77
Avg Low F	55	57	59	53	59	55	53	57	55	55	55	57

Communication

DR Congo – country code +243. Most areas will have some mobile access and Internet can be scarce. Some areas while trekking or on safari may not have mobile access.

Electricity

DR Congo - Electrical current is 220 volts (Type C; electrical plug has two circular pins) (Type E/F; electrical plug has two circular plugs) (Type D; electrical plug has three circular pins)

Gear List

**A comprehensive gear list will be provided for essential clothing items to bring whilst on safari or activities. Please visit the Adventure International Gear & Apparel Shop: <http://adventureinternational.newheadings.com> All proceeds are donated to Kilimanjaro Porters Assistance Project.

Travel Advisories

Make two photocopies of valuables such as your passport, tickets, visas and travelers' cheques. Keep one copy with you in a separate place to the original and leave another copy with someone at home.

Be sure to inform your credit card company as well as your bank you will travel internationally into Africa. This will eliminate any credit card holds for fraudulent activity.

Currency

Carrying cash, an ATM or traveler's check card and also a credit card that can be used for cash advances in case of emergency is advisable. The best places to exchange money are normally bureau de change, which are fast, have longer hours and often give slightly better rates than banks. Local currency is Congolese Franc (CDF), and it is advised to carry hard notes of USD. Better hotels, lodges, and camps might accept credit cards, however it is advised to withdraw cash when visiting remote areas and villages.

Government

DR Congo – is a presidential democratic republic

Religion

DR Congo – the predominant religion is Christianity adhered by 90% of the population. Denominations include Roman Catholic 55%, Protestant 35%, Muslim 5%, Animism 2.4%, Baha'i 0.4%, Hindu 0.2%, and other 1.2%.

Ethnic Groups

The population belongs to four ethnic groups – the Kongo (48%), Sangha (20%), Teke (17%), and M'Bochi (12%) – which comprise more than 40 tribes. In addition, there are small groups of Pygmies, possibly Congo's original inhabitants, in the high forest region. The major ethnic group, the Kongo, occupies the entire area southwest of Brazzaville and accounts for nearly half the nation's population. The Teke, who live north of Brazzaville, are chiefly hunters and fisherman. The M'Bochi (or Boulangi) live where the savanna and the forest meet in the northwest; this group has furnished many immigrants to the urban centers, including the majority of Brazzaville's skilled workers and civil servants. There are about 12,000 Pygmies. In regards to the non-African community, Europeans numbered 8,500 mostly French before the 1997 civil war.

Languages

French is the official language of the Democratic Republic of the Congo. It is meant to be an ethically neutral language, to ease communication among the many different ethnic groups. There are an estimated 242 languages spoken in the country. Only 4 of these have the status of national language; Kikongo (Kituba), Lingala, Tshiluba, and Swahili.

Economy

The economy of the Democratic Republic of the Congo, a nation endowed with resources of vast potential wealth, has declined drastically since the mid 1980's. The two recent conflicts, which began in 1996, have dramatically reduced national output and government revenue, have increased external debt, and have resulted in deaths of more than 5 million people from war, and associated famine and disease. Malnutrition affects approximately two thirds of the country's population. The economy relies heavily on mining. The Congo has 70% of the world's coltan, and more than 30% of the world's diamond reserves, mostly in the form of small industrial diamonds. The coltan is a major source of tantalum, which is used in the fabrication of electronic components in computers and mobile phones. Smuggling of the conflict minerals, coltan and cassiterite (ores of tantalum and tin, respectively), has helped fuel the war in the Eastern Congo. The Democratic Republic of Congo also possesses 50% of Africa's forests and a river system that could provide hydro-electric power to the entire continent, according to a U.N. report on the country's strategic significance and potential role as an economic power in central Africa.

Climate

The DRC straddles the equator and therefore experiences a tropically hot and humid climate. South of the equator there are frequent heavy rains between October and May, and north of the equator the rain falls between April and November. The eastern highlands has a more temperate weather.

Booking

For anyone wanting to book this trip they must fill out our online booking form at <http://www.adventure-international.com/booking/booking.html> ' A 10% deposit is required upon booking and final balance payment at least 60-45 days prior to service being provided. A booking shall be considered confirmed on receipt of 10% deposit. '

PLEASE READ OUR TERMS AND CONDITIONS: <http://www.adventure-international.com/booking/terms.html> Making a reservation with Adventure International, LLC and it's partners signifies acceptance of these terms and conditions.

Payment

Please pay by wire transfer or direct deposit to our US bankers:

Beneficiary Name: Adventure International, LLC

Beneficiary Address: PO Box 2621, Venice, CA

Bank Name: JP Morgan Chase Bank

Bank Address: 2701 1st Ave, Seattle, WA 98121

Account Number: 3171301993

ABA Routing Number: 325070760

SWIFT: CHASUS33

PLEASE QUOTE GROUP NAME(S) WHEN MAKING PAYMENT

We accept credit cards with applicable service fees: 3% US and 4% International

Insurance Information

It is essential that clients take out adequate insurance cover against all risks associated with adventure travel, this means appropriate travel and medical insurance prior to departure of clients from their country of origin. A climb or safari is an adventure holiday and accordingly neither Adventure International, LLC nor their officers and employees shall be liable in way for any loss or damages expenses or costs arising from any incident involving clients that may occur whilst using any of the services provided by either Adventure International, LLC or third parties contracted by the company.

Insurance should at least cover: personal accident, medical expenses, hospitalization, repatriation, trip curtailment, cancellation, and loss of valuables.

For more information about insurance please visit: <http://www.adventure-international.com/booking/insurance.html> OR visit TravelEx Insurance direct website: <http://www.travelex-insurance.com/> and make sure to provide #05-0804 as a reference locator to ensure proper routing of essential client information and documentation.

Force Majeure / Changes

In the event of Force Majeure (circumstances beyond the company's control) Adventure International, LLC will notify client of the nature and extent thereof. It is essential to understand that conditions in countries where adventure holidays occur are not always predictable and border closures, road conditions, and other occurrences from time to time cause delays, frustrations, and diversions from the planned itinerary. Should such an occurrence happen, Adventure International, LLC and its partners will do the best to minimize inconvenience.